

The Lakeridge

4 (OPT. 5) BEDROOM / 3.5 BATHROOM



Elevation B | 2843 sq. ft.

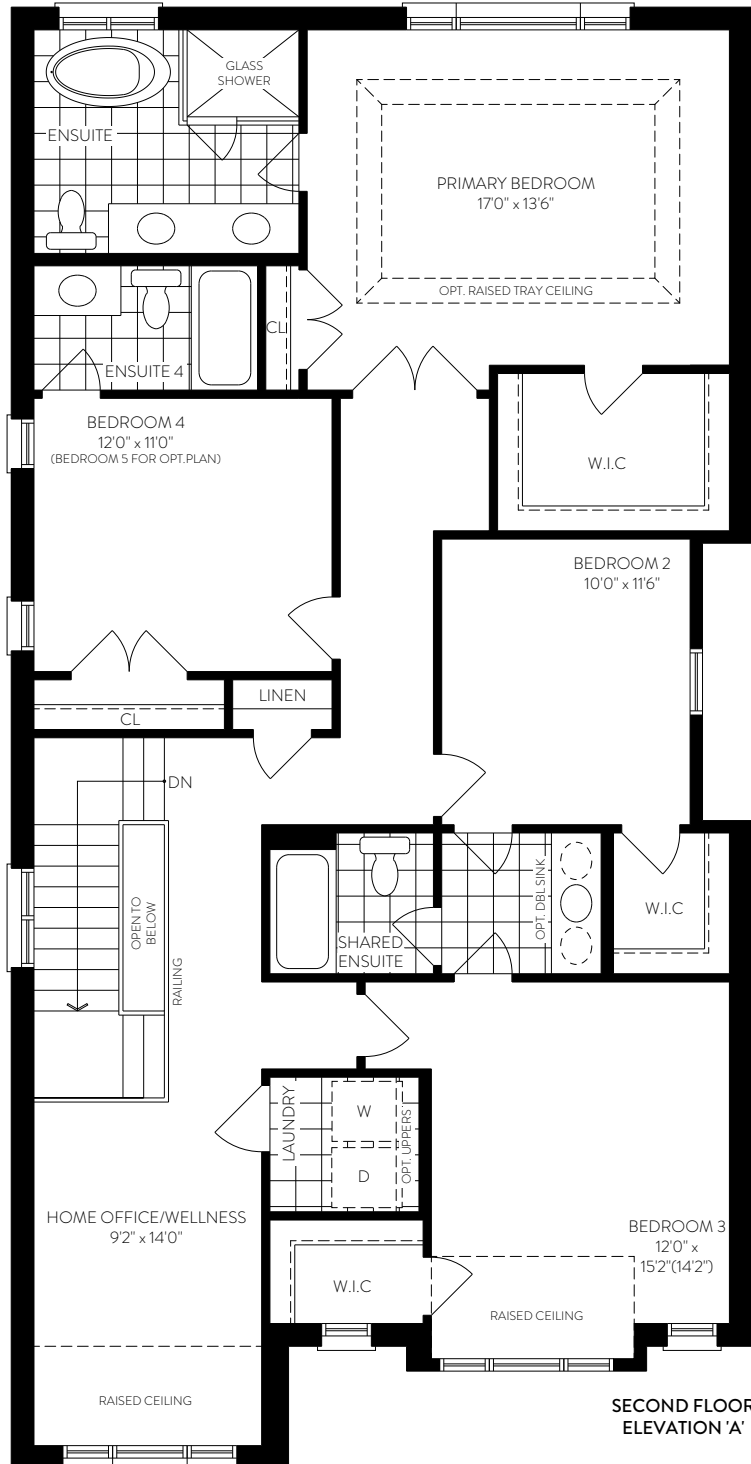
Elevation A | 2861 sq. ft.



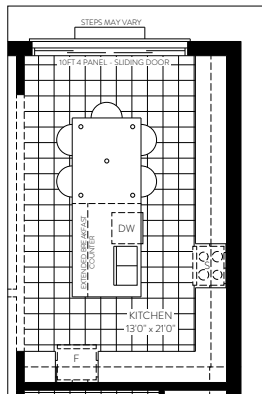
Elevation C | 2844 sq. ft.



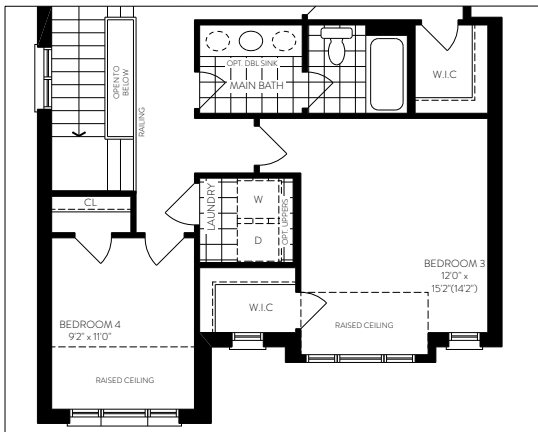
DESIGN FORWARD LIVING



AVAILABLE OPTIONS



OPT. GROUND FLOOR W/
ENTERTAINERS KITCHEN



PARTIAL OPT. SECOND FLOOR
W/ 5 BEDROOMS

The floorplans and elevations shown are pre-construction plans and may be revised or improved as necessitated by architectural controls and the construction process. The measurements adhere to the rules and regulations of the TARIION Warranty Corporation's official method for the calculation of floor area. Floorplan shown may not be depictive of your exact elevation. Actual usable floor space may vary from the stated floor area. Railings on front porch only where required by O.B.C. Locations of furnace, hot water tank, posts and beams may vary and are to be determined by Vendor and Architect. Purchasers shall be deemed to accept the same. All images and renderings are artist concept only and subject to change. Side windows only if siting permits. Ask sales representative for more details. E. & O. E. 3604